



Awsworth Lane
Cossall, Nottingham NG16 2RZ

Guide Price £500,000 Freehold



A bespoke development opportunity has arisen to purchase a former public house situated on a plot size of 0.42 of an acre, with full Planning Permission passed to demolish and develop five detached houses.

The former public house sits on a corner plot within the Nottinghamshire village of Cossall, with the large market town of Ilkeston approximately two miles to the west and the town of Kimberley approximately two miles to the north-east. The A610 is approximately one mile away, as well as the Giltbrook Retail Park. Junction 26 of the M1 motorway is approximately three miles away. Cossall village is semi-rural with a population currently around 562 and the site itself is close to a nearby development by Avant Homes in the neighbouring village of Awsworth.

The full Planning Permission was granted on the 3rd December 2025 by the Local Authority, Broxtowe Borough Council, file reference 26/00179/FUL. The development comprises five, four/five bedroom contemporary family homes, four of which each offer approximately 186sqm of space and a slightly larger one of 195sqm.

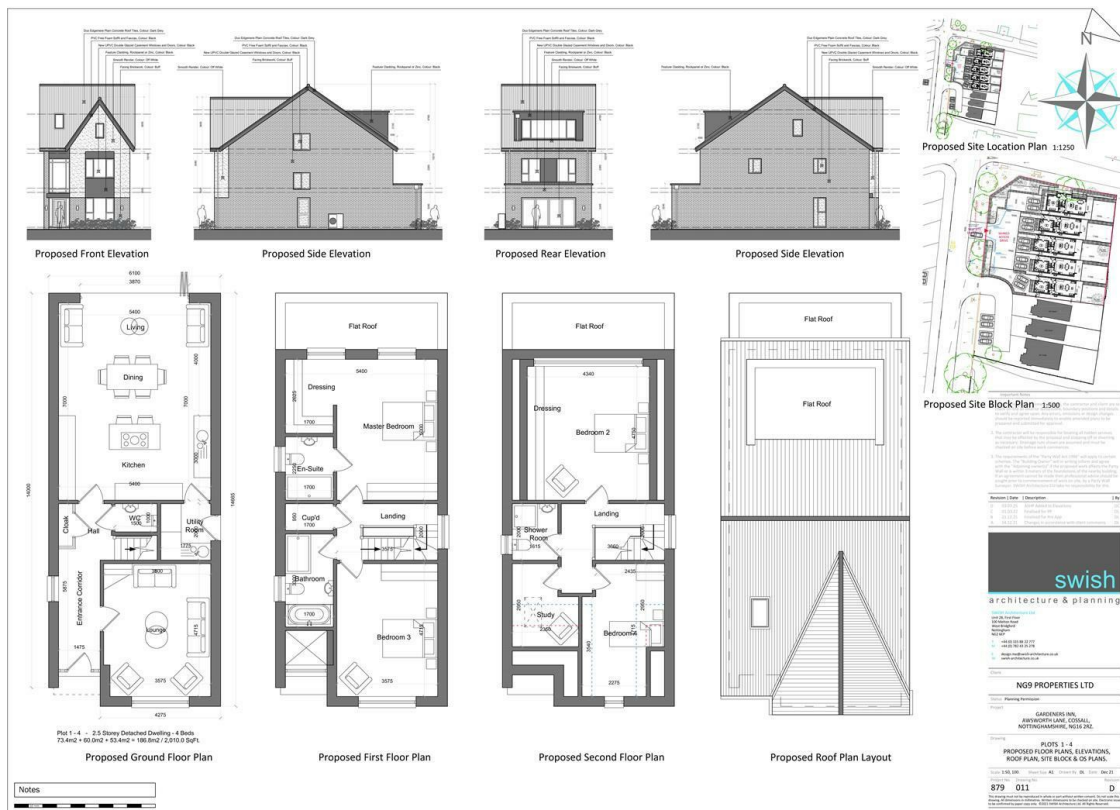
The proposed dwellings will provide a generous and flexible flow of space for growing families with accommodation arranged over three floors, with features including an open plan family dining kitchen with bi-fold doors opening to the rear gardens, principal bedroom with dressing area and en-suite, with two further bathroom facilities.

We anticipate the GDV to be circa £2.5m and offers a great development opportunity.

The former public house has been closed since 2022 and has fallen into disrepair. The site is available immediately and for sale by private treaty.

Full Planning Permission was passed on the 3rd December 2025 and all the relevant documentation can be viewed by visiting the Planning Section of Broxtowe Borough Council website and searching the file reference 25/00179/FUL.





These details are for guidance only and complete accuracy cannot be guaranteed. If there is any point, which is of particular importance, verification should be obtained. All measurements are approximate. No guarantee can be given with regard to planning permissions or fitness for purpose. No apparatus, equipment, fixture or fitting has been tested.